



**ADAMSONS  
BARTON  
KENDAL**

Bamford Way, Rochdale OL11 5JL

OIRO £450,000



ADAMSONS BARTON KENDAL are delighted to offer for sale, this desirable, recently renovated 4 bedroomed detached family home, situated on an extensive plot in the heart of Bamford, conveniently positioned for all the usual local amenities including much sought after primary schools. This wonderful family home benefits from 2 spacious reception rooms and a large, wrap-around conservatory with a ground floor wet room, kitchen and toilet. There are 4 spacious bedrooms and 1 bathroom, although there is a space for an en-suite off the master bedroom. The property benefits from a gas fired central heating system and double glazed windows with a driveway and double garage.

**VIEWING STRONGLY RECOMMENDED**

**VACANT POSSESSION AVAILABLE - COMPETITIVE PRICE - NO CHAIN**

**Head Office** - 122 Yorkshire Street  
ROCHDALE  
Lancashire  
OL16 1LA  
Tel : (01706) 653214

**Middleton Office** – 13 Long Street  
Middleton  
M24 6TE  
Tel : (0161) 643 0777

## **THE ACCOMMODATION COMPRISES:**

(Measurements are approximate to the nearest 0.1m and for guidance only and they should not be relied upon for the fitting of carpets or the placement of furniture). No checks have been made on any fixtures and fittings or services where connected (water, electricity, gas and drainage) heating appliances or any other electrical or mechanical equipment in this property).

### Ground Floor

#### **ENTRANCE HALL**

A spacious hallway with staircase to the first floor

#### **LOUNGE - 5.8 x 4.0 metres (19' x 13'1")**

A wonderful, recently re-plastered reception room

#### **Rear DINING ROOM - 3.6 x 2.7 metres (11'9" x 8'10")**

Patio doors leading out to the rear garden (recently re-plastered)

#### **KITCHEN - 3.1 x 3.2 metres (10'2" x 10'6")**

Single bowl stainless steel sink unit, range of wall and base units with built in double oven, hob and extractor hood, integrated dishwasher, 'American Style' fridge/freezer, tiled floor, cupboard under the stairs

#### **VANITY ROOM**

Low level wc, wash hand basin

#### **CONSERVATORY - 5.4 x 3.0 metres plus 1.9 x 2.6 metres (17'8" x 9'10" plus 6'2" x 8'6")**

An L-shaped conservatory with patio doors leading out to the rear garden area

#### **WET ROOM**

Shower is not connected / useable

### First Floor

#### **LANDING**

#### **MASTER BEDROOM - 3.6 x 3.6 metres (11'9" x 11'9")**

A range of fitted wardrobes and bedroom furniture, built in cupboard - previously an en-suite

#### **BEDROOM TWO - 3.6 x 3.6 metres (11'9" x 11'9")**

Wonderful outlook to the rear

#### **BEDROOM THREE - 2.6 x 2.4 metres (8'6" x 7'10")**

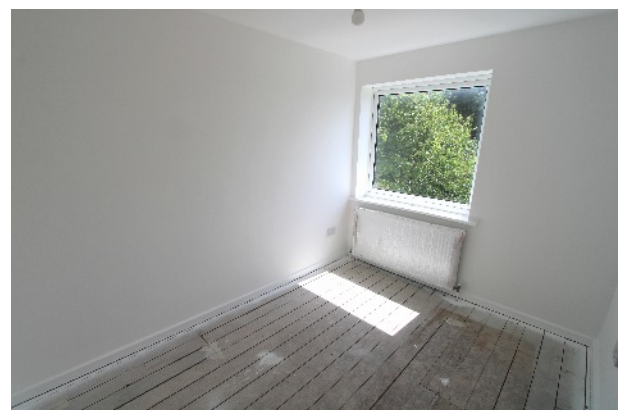
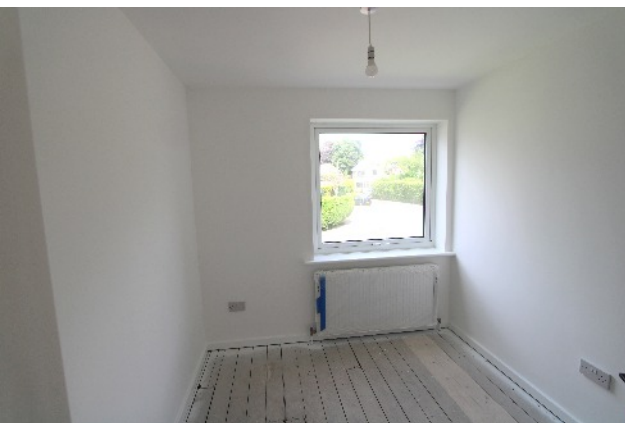
A range of fitted wardrobes and bedroom furniture

#### **BEDROOM FOUR - 3.1 x 2.4 metres (10'2" x 7'10")**

A stunning outlook to the rear

#### **Family BATHROOM - 2.6 x 2.2 metres (8'6" x 7'2")**

Panelled bath with shower above, pedestal wash hand basin, low level wc - recently installed modern matching suite in white, tiled walls, spotlights to ceiling





## Externally

There is front driveway leading to a DOUBLE GARAGE and spacious gardens to both front and rear. The rear garden is 2 tiered, with an elevated patio area.

## VIEWING STRICTLY BY APPOINTMENT WITH SOLE AGENTS ADAMSONS BARTON KENDAL

Energy Performance - D

Council Tax Band - E

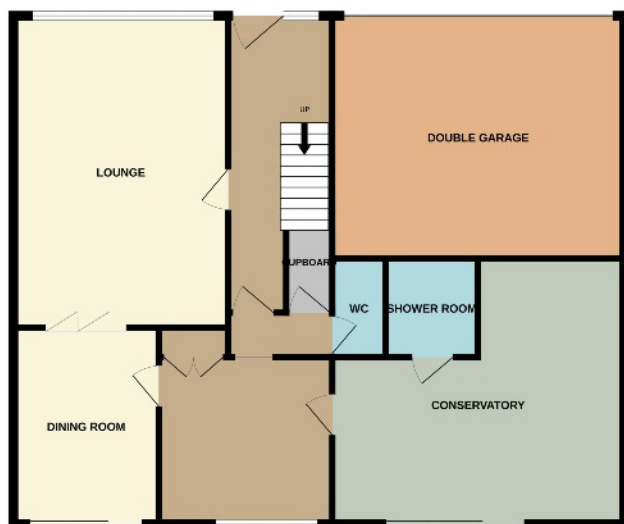
Tenure - Freehold

Score	Energy rating	Current	Potential
82+	A		
81-81	B		
69-80	C		
55-68	D	55 D	73 C
39-54	E		
21-38	F		
1-20	G		



GROUND FLOOR

1ST FLOOR



Whilst every attempt has been made to ensure the accuracy of the floorplan contained here, measurements of doors, windows, rooms and any other items are approximate and no responsibility is taken for any error, omission or mis-statement. This plan is for illustrative purposes only and should be used as such by any prospective purchaser. The services, systems and appliances shown have not been tested and no guarantee as to their operability or efficiency can be given.  
Made with Metropix 62624

w - [abkproperty.co.uk](http://abkproperty.co.uk)

e - [sales@abkproperty.co.uk](mailto:sales@abkproperty.co.uk)

Adamsons Barton Kendal for themselves and for the vendors or lessors of this property whose agents they are, give notice that (i) the particulars are set out as a general outline only for the guidance of intending purchasers or lessees, and do not constitute, nor constitute part of an offer or contract; (ii) all descriptions, dimensions, references to condition and necessary permission for use and occupation, and other details are given without responsibility and any intending purchasers or tenants should not rely on them as statements or representations of fact but must satisfy themselves by inspection or otherwise as to the correctness of each of them; (iii) no person in the employment of Adamsons Barton Kendal has any authority to make or give any representations or warranty in relation to this property.

Due to a change in the legislation as from 1<sup>st</sup> March 2004 we are required to check your identification. This is a legal requirement and applies to all Estate Agents: (i) proceeding to market any property; and (ii) should you make an offer on one of our properties and this offer becomes acceptable, before we can instruct Solicitors to proceed with the transaction. Suitable identification can be: Current signed Passport; New style Driving Licence with photograph; Inland Revenue Tax notification